

Commercial Construction Trends in the Southeast

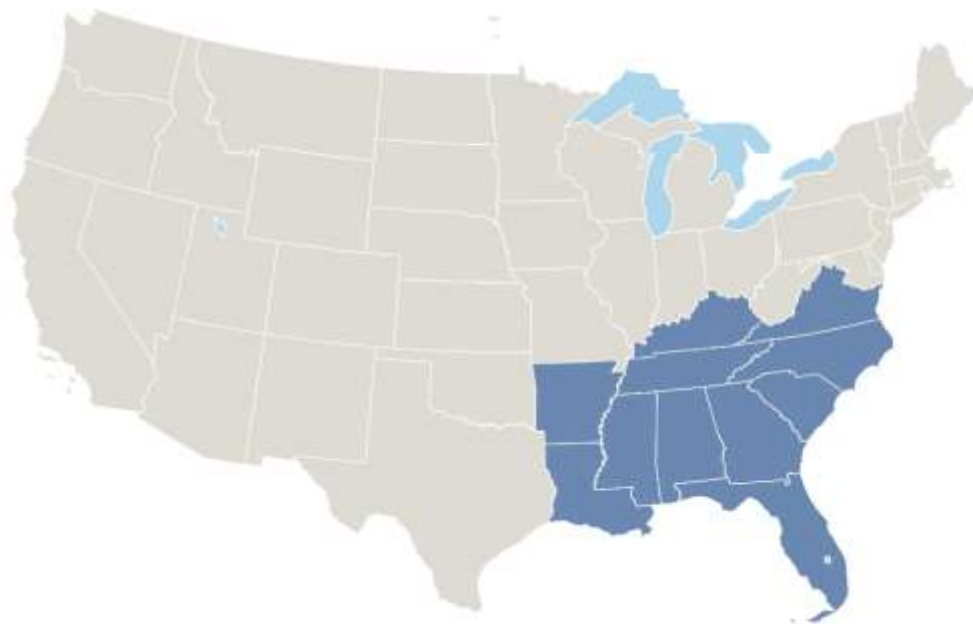
Ashley Fournier, Project Manager
Southeast Energy Efficiency Alliance



SEEA
SOUTHEAST ENERGY EFFICIENCY ALLIANCE

SEEA SERVES THE SOUTHEAST

The Southeast Energy Efficiency Alliance (SEEA) promotes energy efficiency as a catalyst for economic growth, workforce development and energy security. We do this through collaborative public policy, thought leadership, outreach programs, and technical advisory activities.



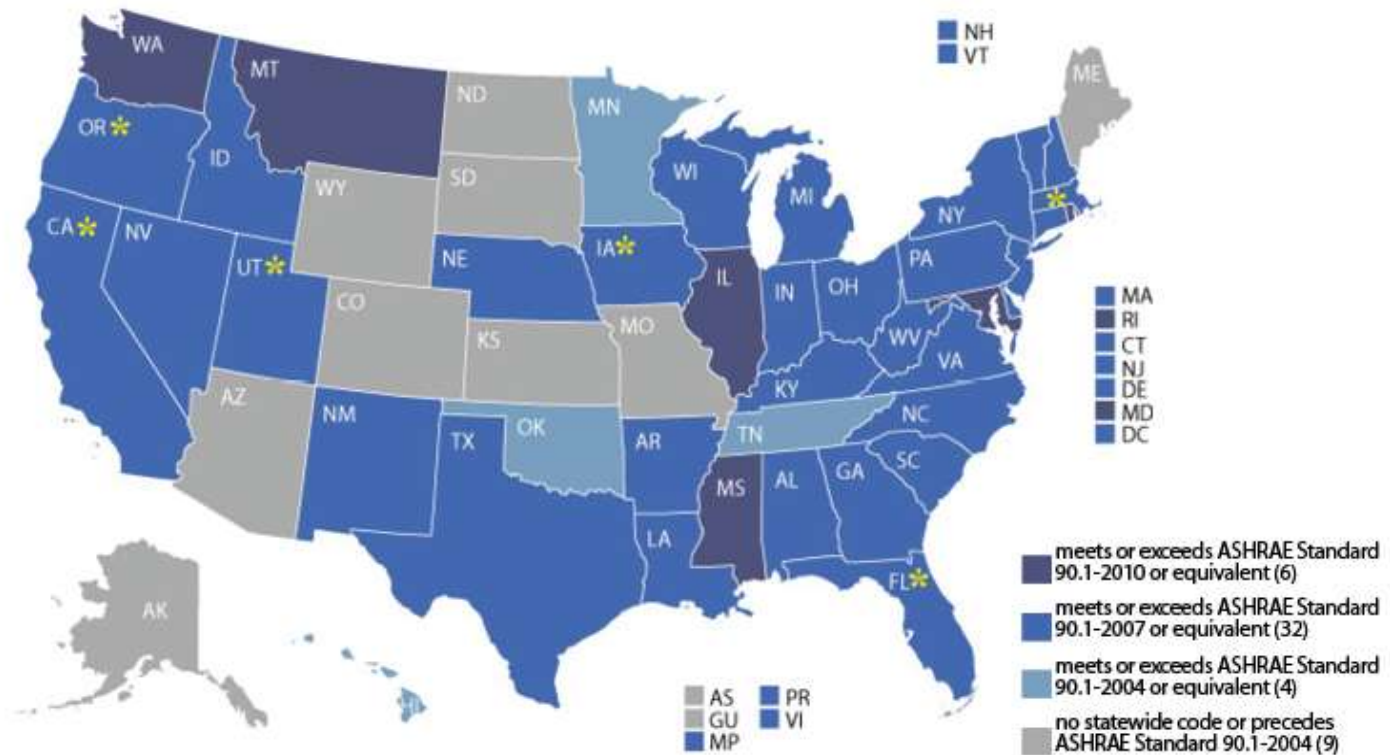
**Regional Energy
Efficiency Organization**

**Eleven-state
footprint**

**Non-profit,
non-partisan**

Commercial State Energy Code Status

AS OF MAY 1, 2014



BCAP Dedicated to the adoption, implementation, and advancement of building energy codes

Get all the most up-to-date code status maps and other valuable resources at www.energycodesocean.org

* state has adopted a new code to be effective at a later date

NOTE: These maps reflect only mandatory statewide codes currently in effect.

ASSUMPTION: STRONGER CODE BAD FOR BUSINESS

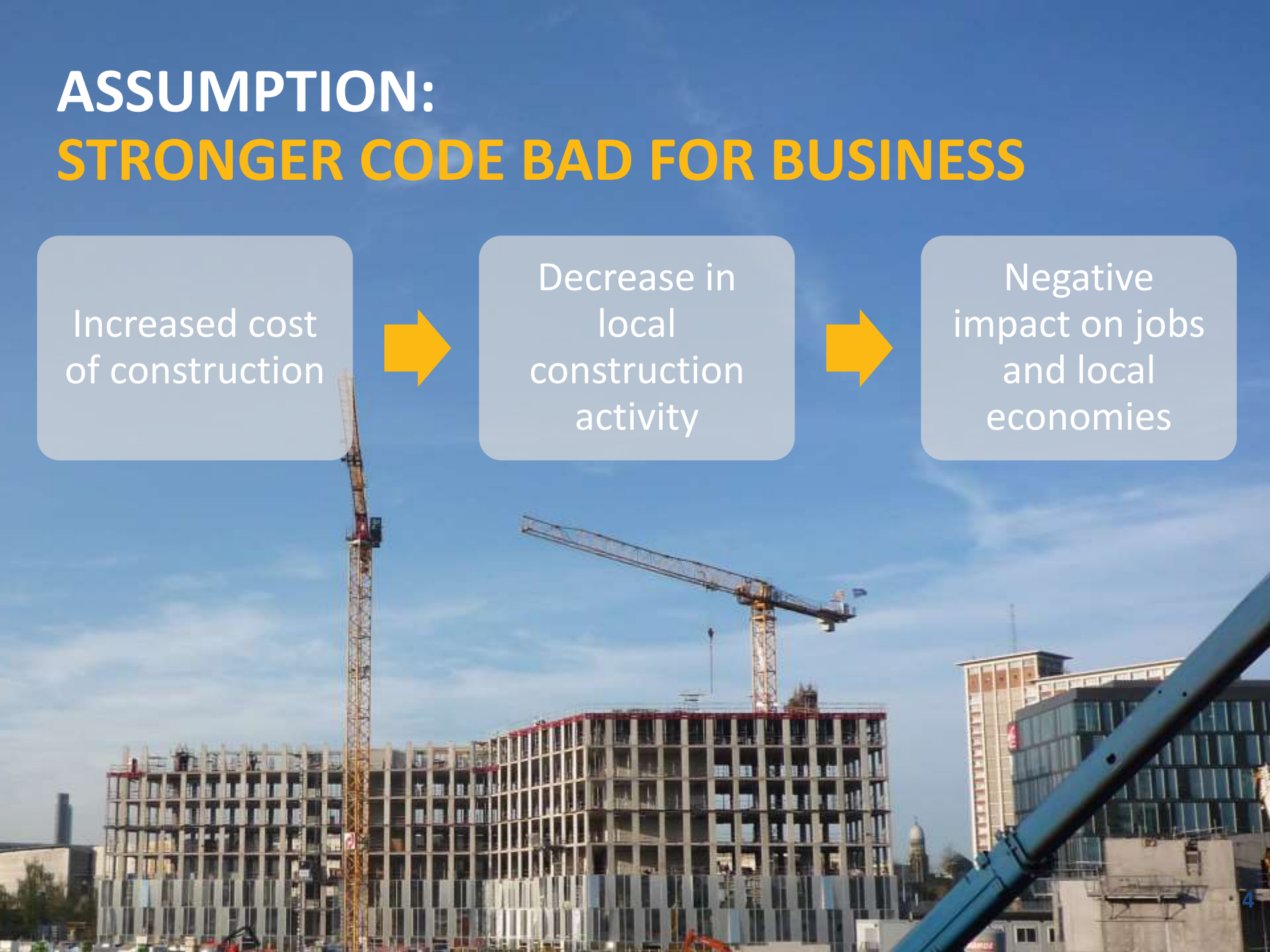
Increased cost
of construction



Decrease in
local
construction
activity



Negative
impact on jobs
and local
economies



THE QUESTION:

Do commercial energy codes suppress local construction activity?

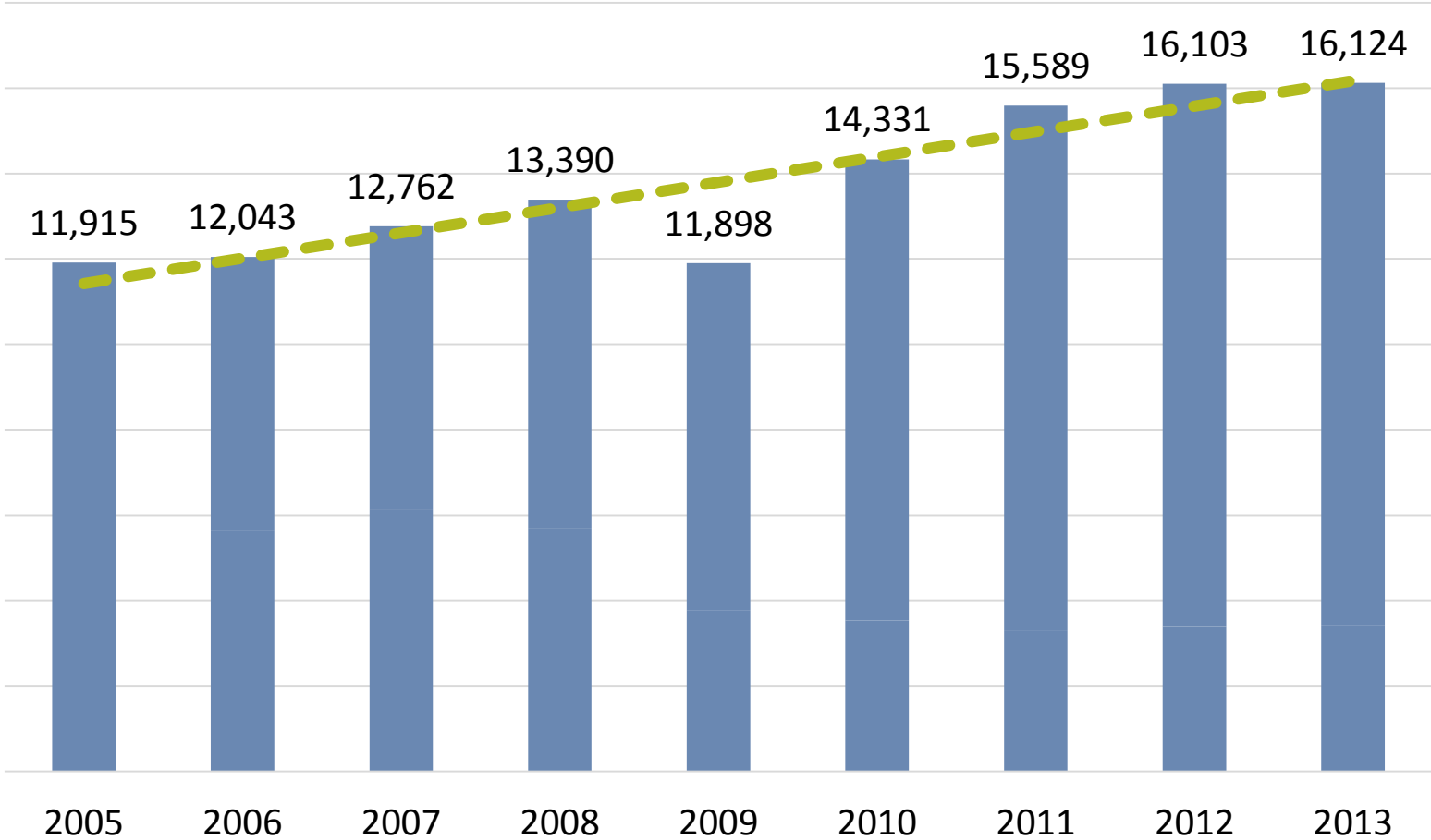


COMMERCIAL CONSTRUCTION TRENDS

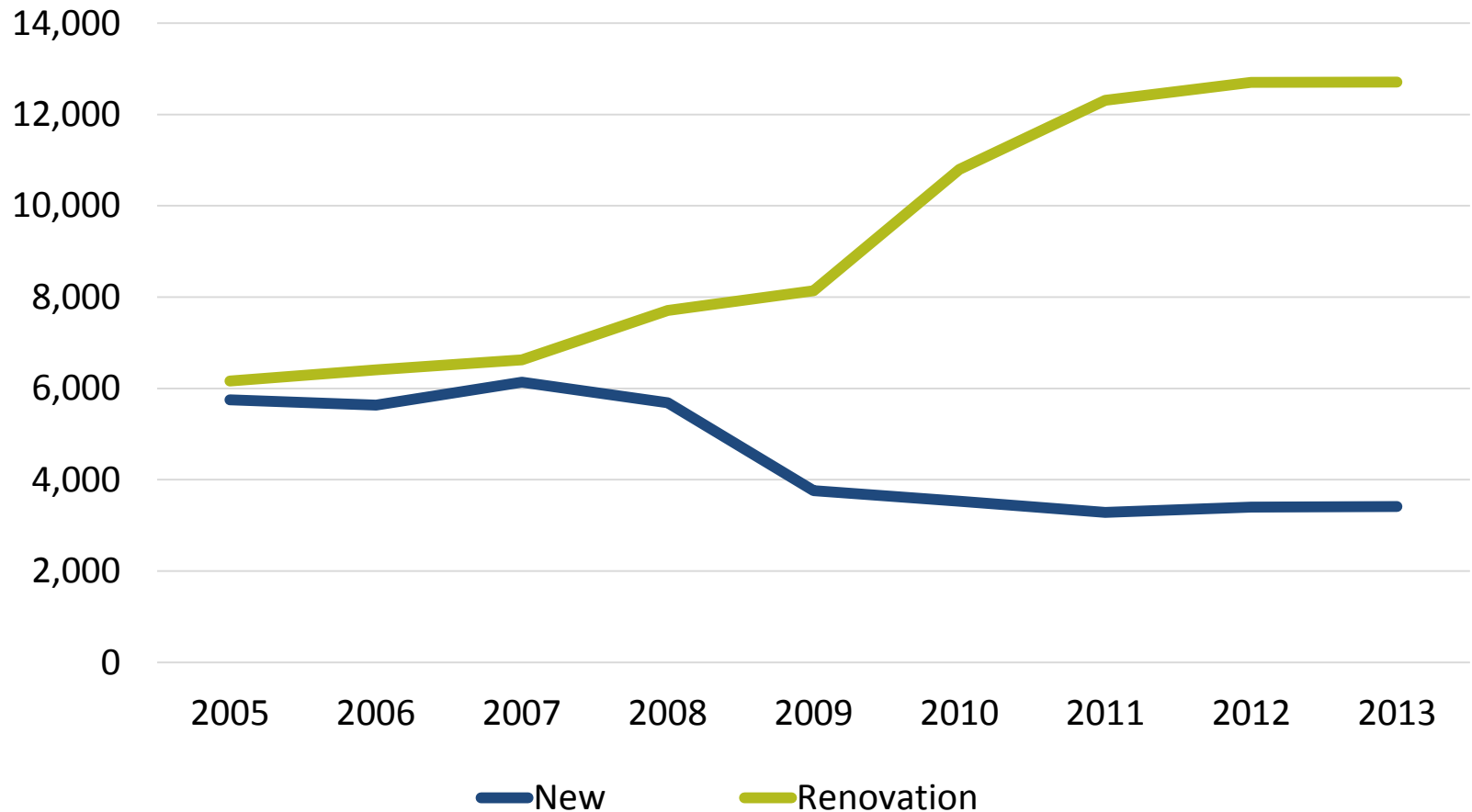
- Data for 11 states from 2005 through 2013
 - Number of “pulled permits” or construction starts
 - Construction project expenditures
- Analyzed data based on state, county, building type
- Benchmarked against each state’s energy code



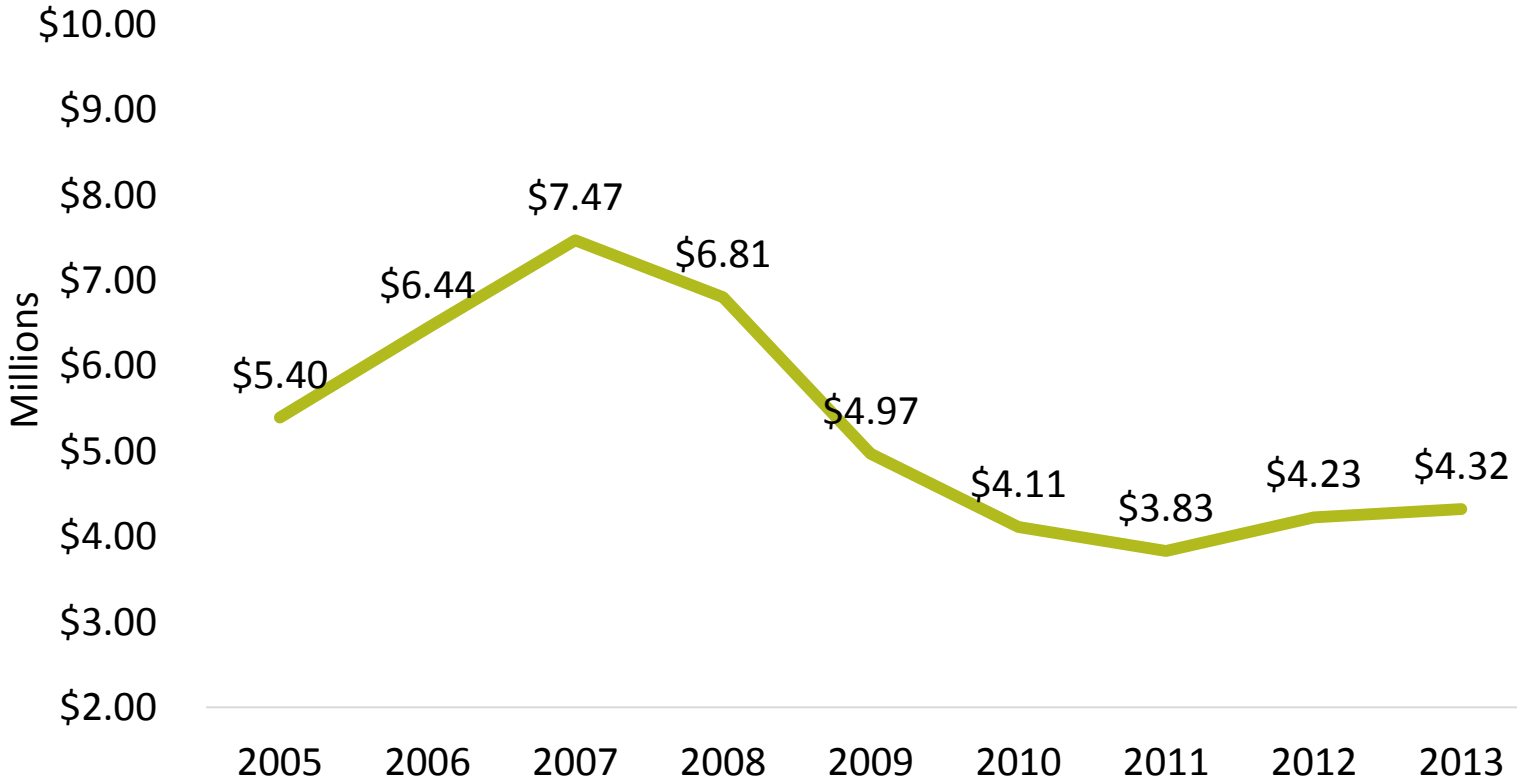
COMMERCIAL PERMITS IN THE SOUTHEAST 2005-2013



PERMITTING LEVELS FOR NEW CONSTRUCTION VS. RENOVATION



AVERAGE CONSTRUCTION EXPENDITURES PER PROJECT IN SOUTHEAST



HIGH LEVEL CONCLUSIONS



Commercial permit numbers are **on the rise** in the Southeast



Renovation activity has **grown**, new construction has **declined**



Construction expenditures have **decreased**



No evidence that energy codes suppress construction starts

NEXT STEPS

- Whitepaper to be released at the end of September
- We want to hear from you!



THANK YOU!

Ashley Fournier

Project Manager

Southeast Energy Efficiency Alliance

afournier@seealliance.org



A large, light blue circular logo is centered on the page. It features a series of concentric, wavy lines that create a sense of motion and depth, resembling a stylized globe or a dynamic circular pattern. The lines are of varying thickness and curve, giving it a three-dimensional appearance.

www.SEEALLIANCE.org